

# Q S X P E

## ***ZS2PE***

FREQUENCIES:

Bulletin	3640 Khz
	7107 Khz
National Call	145,5 Mhz
P.E. Repeater	145,05/65
Grahamstown	145,20/80
Lady's Slipper	145,10/70



***Port Elizabeth Branch of the  
South African Radio League***

**P.O.Box 462, Port Elizabeth. 6000.**

**17 MAR 1980**

PORT ELIZABETH BRANCH.

THE NEXT MEETING OF THE PORT ELIZABETH BRANCH OF THE SOUTH AFRICAN RADIO LEAGUE WILL BE HELD AT THE Y.M.C.A., HAVELOCK STREET PORT ELIZABETH AT 8P.M. ON FRIDAY 21st MARCH, 1980.

THE AGENDA FOR THE MEETING IS AS FOLLOWS:

1. Welcome by Chairman
2. Apologies
3. Minutes of the previous General meeting held 15th March, 1980.
4. Matters arising from Minutes.
5. Financial Report.
6. Correspondence.
7. General.

UNDER GENERAL, THE MOTIONS SUBMITTED FOR CONSIDERATION BY THE FORTHCOMING ANNUAL GENERAL MEETING OF THE LEAGUE, WILL BE DISCUSSED. PLEASE BRING ALONG YOUR FEBRUARY COPY OF RADIO Z.S. IT IS IMPORTANT THAT THE MEMBERS OF THE BRANCH SIGNIFY HOW THEY WISH THE CHAIRMAN TO VOTE AT THE MEETING.

-----

The Bulletin Roster for the next month is as follows:

30th March	-	Marge ZS2OB	302334
6th April	-	Frank ZS2CY	511259
13th April	-	Brian ZS2AB	303498

If you have any news for the bulletins, please let the bulletin reader know. It will be much appreciated.

ohm\*ohm\*ohm\*ohm\*ohm\*ohm\*ohm\*ohm\*ohm\*ohm\*ohm\*ohm\*ohm\*ohm\*ohm

SPECIAL FORTHCOMING EVENT.

\*\*\*\*\*

On Sunday 16th March, 1980, all members and their families are invited to attend a Social Braai in order (a) to meet each other and (b) to say Farewell to Andre ZS2BK who is moving to Division 6. Please bring your own meat, salads and liquid refreshments and fires will be provided. Starting time is approximately 11.30a.m. and the venue will be the Scout Hall, near 10th Avenue Walmer, which has all the facilities necessary and is a safe venue for any youngsters.

PLEASE REMEMBER THIS DATE AND MAKE A GOOD EFFORT TO ATTEND - IT WILL BE NICE  
TO MEET THE NEW MEMBERS AND THEIR FAMILIES.

\*\*\*\*\*

BRANCH PROJECTS: The Branch will be undertaking several building projects in the near future, including such items as Pre-amps, G.D.O.'s, S.W.R. meters, Capacitance Bridges, Impedance Bridges, etc. As far as possible these will be supplied in Kit form at prices very favourable to those interested. If you are one of those who are keen on building, and would like to have these items in your shack, please let the Committee know, so that arrangements may be made to get the project going.

\*\*\*\*\*

SOME MORE NEWS FOR THOSE INTERESTED IN DX AND  
CERTIFICATES.

\*\*\*\*\*

OLYMPIC GAMES - 1980.

The U.S.S.R. will be using some special prefixes for the duration of the Olympic Games this year. (At the time of going to press, there is as yet no positive news of a change of venue, so this information should still apply).

Period will be from January 1st until August 3rd 1980 and the series RX....RZ... by all accounts will be propagated.

The activity for this occasion will come from one hundred Moscow stations and 25 stations in each of the cities where Games will be held. 'UA' stations with two suffix letters will use 'RX' whilst stations with three suffix letters will use 'RZ'.

Other prefixes which will be used, include - UK stations use RK, UV stations use RV, UW stations use RW, UC2 stations use RZ2, UR2 stations use RU2, UB5 stations use RZ5, UT5 stations use TR5, UY5 stations will use RY5.

Special stations will operate from varying locations.

July 1st to August 3rd	-	Call RM30 QRV from Moscow
		Call RT20 QRV from Tallin
July 15th to August 3rd	-	Call RL10 QRV from Leningrad
		Call RK50 QRV from Kiev
		Call RM20 QRV from Minsk.

\*\*\*\*\*

'OLIMPIADA-80' AWARD.

Will be made available to anyone who may be interested and on the accumulation of 40 points.

Special stations, RM30 - RT20 - RL10 - RK50 - RM20, each carry 5 points.

All other special prefix stations carry one point each. One QSO per each of the stations in Oblast 170, carry one point each.

You must send a certified copy of your log data, together with your QSL for each of the USSR stations worked to P.O. Box 88, Moscow.

\*\*\*\*\*

GIBRALTAR ZB2 and ZB2BU.

The ZB2 Award is available for working five ZB2 stations since January 12th, 1978, any mode, any band. Requirements for this certificate - certified copy of log data, plus fee of 3 U.S. Dollars. Apply to Gibraltar Amateur Radio Society, P.O. Box 292, Gibraltar.

The ZB2BU Award is issued by the same address for working ZB2BU station on three different bands as from January 12th 1978. Fee and requirements as for ZB2 Award.

\*\*\*\*\*

KNOWLEDGE - the more you know the better you are able to reject the persistent persuasions of the encyclopaedia salesman.

LANGUAGE - a system of speech employed by many people to replace thought.

MINUTES OF THE GENERAL MEETING OF THE PORT ELIZABETH BRANCH OF THE SOUTH AFRICAN RADIO LEAGUE HELD AT THE Y.M.C.A., HAVELOCK STREET, PORT ELIZABETH ON 15th FEBRUARY, 1980.

---

PRESENT: 20 members and visitors.

APOLOGIES: Zs2EA.

The Chairman welcomed everyone to the meeting, especially the ladies.

MINUTES: The Minutes of the meeting held 18th January, 1980, having been published in QSX-PE were taken as read, proposed by Cyril ZS2KX and seconded by Brian ZS2AB.

MATTERS

ARISING: -

CORRES: Council Minutes.  
Car Stickers.

FINANCE: The Treasurer reported that no log books had been received yet, but that he had a supply of QSL stickers. The Chairman referred to the Component Sale which had been held on 26th January at which a total of R458 had been realised. He thanked everyone for their wonderful efforts and said that with the proceeds of the sale another special savings account had been opened as the money was not necessary in the daily account where it only earned 3% interest. It would earn maximum interest in special savings.

GENERAL: The Chairman thanked Cyril ZS2KX for the time and effort he was putting into the c.w. classes which were making good progress. The Chairman stated that Colin ZS2CT was leaving Port Elizabeth shortly to further his studies in Cape Town and on behalf of the Branch wished him a pleasant stay and good luck. Mention was also made of the change of venue and the Chairman said that the Park Drive Bowling Club was unfortunately not available. Two other requests had been made the same evening and all three had been turned down. Every effort would be made to find another venue. The Chairman informed the meeting of the Hobbies Fair which is due to be held later in the year and said that the Branch was waiting for the application forms. He had spoken to Mr. John Stadler who was chairman of the organising committee and it was almost certain that the Branch would be allocated the usual stall near the window. Every bit of assistance would be needed, both with the erection of the stand and also manning the stand during the day. He asked members to keep this event in mind as we wished to make a special effort to make the stand appealing to persons possibly interested in amateur radio. Cyril asked if the motions for the Annual General meeting had been received but to date these had not been forthcoming. It was stated that Ken Bradley ZS2HI was not making good progress but it was hoped that this was only a temporary state of affairs.

There being no further business, the meeting was declared closed and three films were shown.

sgd.  
R.W. Schönborn ZS2RS  
Chairman

sgd.  
M. T. Colson ZS2OB  
Secretary

# A Self-Contained, Fully-Automated, Transistorized Fuse Tester

## — amaze your friends

Take a look at the English answer to the battery and bulb.

*C.F.J. Ward G3TAI  
50 Lakeside  
Bracknell, Berkshire  
England RG12 2LE*

**H**ere is a simple fuse tester for the shack

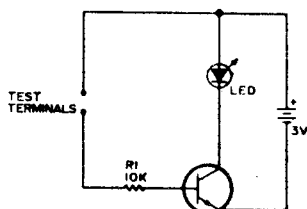


Fig. 1.

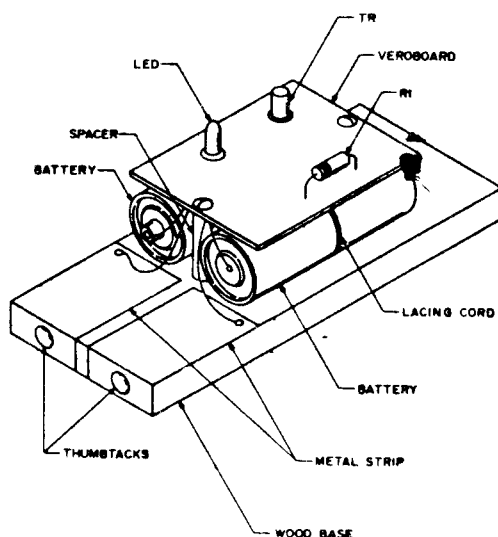


Fig. 2.

which is quick and easy to build and use. Although it is only one step better than a battery and bulb, it does have an advantage in that it will test those low-current fuses that appear here and there. (And it is bound to impress your nontechnical friends!)

The circuit is shown in Fig. 1, and operation is as follows:

1. With no fuse connected, there is no base current and, hence, no col-

lector current; the LED remains dark. Use of a silicon transistor ensures that the leakage current is negligible.

2. When a short circuit (good fuse) is placed across the test terminals, it completes the base drive line, and base current will flow. The resulting collector current will light the LED.

The base current will have a value of approximately 0.24 mA since the supply is 3 volts. The base-emitter drop is about 0.6 volts, and the base drive resistor is 10k Ohms. This will cause a collector current of HFE times 0.24 mA to flow, and, for a typical HFE spread of 50 to 150, this will be 12 to 36 mA, which will easily light the LED. With my unit, I used a low-gain transistor salvaged from a surplus computer board which gives a collector current of 16 mA. With a high-gain transistor, the collector current can be adjusted by increasing the value of the base drive resistor, but it is much better to use a low-gain transistor because leakage cur-

rent through the fingers when using the tester can cause the LED to light even if the fuse is blown! This effect is much worse with high-gain transistors.

### Construction

The tester can be made up as shown in Fig. 2. The components are mounted on a small piece of Veroboard. This is fixed to the wooden base plate with screws and spacers made from ball-point pen cases cut into ¼-inch-long tubes. The two AA-size batteries are tied together with lacing cord, which holds them against the spacers. The test terminals are made from some brass strip that I had in the junk box, but bits cut from an old can would do as well. The batteries are soldered into the circuit since no current flows unless a good fuse is tested. They should last a long time with the intermittent use expected of a fuse tester.

I have drilled a hole in the base of my tester so that it can be hung up when not in use. ■

DX ROUND-UP - PREFIX CHANGES.

The ever increasing allocations from ITU of Country prefixes is getting to the stage where not many people can keep abreast of them all. The following list are allocations from A2 through to Z9 and may be of use as a reference source. Prefix in brackets after Country name is the one usually used by Amateurs, if different from the main block allocated.

A2 Botswana (A22)	J2 Djibouti (J28)
A3 Tonga (A35)	J3 Grenada
A4 Sultanate of Oman	J4 Greece
A5 Bhutan (A51)	J5 Guinea-Bissau.
A6 United Arab Emirates	J6 St. Lucia
A7 Qatar	J7 Dominica
A8 Liberia	J8 Not yet allocated.
A9 Bahrain	J9 Not yet allocated.
C2 Nauru (C21)	L2 to L9 Argentina
C3 Andorra (C31)	P2 Papua New Guinea (P29)
C4 Cyprus	P3 Cyprus
C5 Gambia	P4 Netherlands Antilles
C6 Bahamas	P5 to P9 Korea
C7 World Meteorological Organisa-	S2 Bangladesh
tion.	S3 Bangladesh
C8 Mozambique	S4 Not yet allocated.
C9 Mozambique	S5 Not yet allocated.
D2 Angola	S6 Singapore
D3 Angola	S7 Seychelles Republic (S79)
D4 Cape Verde Republic	S8 Transkei Republic
D5 Liberia	S9 Sao Tome Republic (S92AA - ZZ)
D6 Comoro Republic (D68)	T2 Tuvalu Island
D7 South Korea	T3 Kiribati Republic (formerly Gilbert Island)
D8 South Korea	T4 to T9 (not yet allocated)
D9 South Korea	Y2 to Y9 German Democratic Republic
H2 Cyprus	Z2 to Z9 Not yet allocated.
H3 Panama (H31)	
H4 Solomon Island (H44)	(Acknowledgement for List to "Monitor Magazine").
H5 Bophutatswana	
H6 Nicaragua	
H7 Nicaragua	
H8 Not yet allocated	
H9 Not yet allocated.	

DX OPERATING NEWS.

Nepal (9NIMM)	Father Moran, is operating daily at 23:00 UTC on 14210 kHz. QSL via N7EB.
Amsterdam Island (FB8ZO)	is also operational daily, on CW from 15:30 UTC on 14030/14040 kHz, and on SSB at 11:00, 17:00 and 22:00 UTC on 14105 kHz. QSL via F5VU.
The Sudan (VE3BVD/ST2)	is on 14195 kHz from 03:00 UTC, and on 28515 kHz at 12:00 UTC QSL via the address in the 1980 callbook.

FOR SALE

KENWOOD TR7200G 2 metre transceiver. 23 Channels - 17 sets crystals fitted. All current repeaters and simplex. Excellent receiver sensitivity. Tx 10 watts. Bargain at R200.

Dick ZS2RS

Phone 541461

Home 324737.

\*\*\*\*\*

ROUND AND ABOUT.

\*\*\*\*\*

Congratulations are in order this month to two Uitenhage hams - or should we say, one Ham and one Hamess. Kelly, formerly ZR2CA has passed his Morse and now sports the call sign of ZS2TX and Sheila ZS2BR has finished her first year and can now be heard on Phone on the DX bands.

Two of our members will be making moves from Port Elizabeth for various reasons. Colin ZS2CT has already left for Cape Town to further his studies there and we wish him a pleasant stay and much good luck with his work. Andre ZS2BK, the Vice-Chairman has been transferred to Johannesburg and will be leaving within five or six weeks. A large gathering of hams were in attendance to give Andre a hand with taking down his antennas. Andre and family were recently on holiday in Plettenberg Bay, but were heard operating "Mobile" on their way home on the 6th March, due to the fact that their 1979 car licence expired and the new disc wasn't on holiday with them in Plettenberg Bay. Hard luck Andre, but all the members of the Branch wish you and family much happiness in Division 6 and we hope to hear you on the Bands as soon as possible.

We are pleased to hear from Dudley ZS2AW who visited Ken ZS2HI recently that Ken is definitely improving. Chatting to the male nurse, Dudley was told that Ken is more settled and less confused. He certainly looks better and has been moved to a new ward which has a normal clinical atmosphere.

A new resident of Grahamstown is Breda ZR2BW formerly of Kareedouw Good luck Breda .....and what about your new address?

Congratulations are also due to ZS2GE of the Rhodes Physics Department who was recently promoted.

Apparently the weather has not been too kind in Fort Beaufort for June ZS2JJ and Mike ZS2MJ with temperatures of 40°. June apparently had cause to make big noises for an air conditioner in her darkroom, before it is too late, and her dog Peanuts has recently caused them a few sleepless nights while it took to wandering around Fort Beaufort. Peanut's goose had now been cooked once and for all.

Do you find QSX-PE dull, out of touch and not worth reading? If your answer is yes, why not drop a few lines of informative matter into P.O. Box 462, or perhaps an article about your pet-subject, your successful modification to some equipment, etc. You will then help to make QSX-PE the way YOU want it. Afrikaans articles would be particularly welcome.

If your answer is No, why not try to make it more interesting? Articles covering any aspect of Amateur radio are always welcome. They don't need to be of professional quality - the Editor and members are also only amateurs. Remember, if you have anything of interest to be published, the address is P.O. Box 462, Port Elizabeth, 6000.

\*\*\*\*\*

IN PASSING..... Learn something new each day!!

The SIX most important words: "I admit I made a mistake".

The FIVE most important words: "You did a good job".

The FOUR most important words: "What is your opinion."

The THREE most important words: "If you please".

The TWO most important words: "Thank you".

The ONE most important word: "We".

The LEAST most important word: "I".

X-OX-OX--OX-OX-OX-OX-OX-OX-OX

## SPECIAL REPORT:

HAVE YOU TRIED THE DX ON 40 METRES? IF YOU'VE NOT, YOU  
DON'T KNOW WHAT YOU'VE MISSED....

IF you can ignore the S9 and the crashes of QRN, and search between those S9 plus 60 commercial broadcast stations you will find a great deal of DX on 40, both CW and SSB.

Many stations commented, when contacted, that ZS operators are as rare as dinosaurs on 40 metres and many YC, VK and ZL amateurs are very keen indeed to contact ZS boys.

So how about it?

Best times appear to be 1500 GMT to around 2000 GMT, but many countries have been worked between midnight and daybreak - for those suffering from insomnia!

Some of the stations active on the 40 metre band are listed here:

CW: UQ2GFM, JA2AAQ, PY4BYI, DL6NI, F6BUM, OK3TAB/D2A, LU8DQ, PY2JN, JF1XUM, ZD8TC, UA9OBG, PT2FI, JE2HOI, I1ZQD, HA3MQ, I2SBW, DJ2BW, F9GL, ZS5XT, JA8JL, TF3YH, KL7CYL, HB9EU, K9RZ and K1AR.

SSB: YC6HS, YC2BVU, YC2BWD, YC1GJ, UK9UAO, YC2BOT, JR1DZA, KC6IN (Ponape Island), JA9UX, P29MJ, YBOWR, HMOS, YC1BMI, JA2BAY, 5Z4YV, VK4TM, VKOJC, VK6IT, VU2DPK, I2VRN.

Other stations heard but not worked include (on SSB) OD5MR, SV8JE, 9H4L, AP2KS, OK2BMF, YULEXY and OELETW, with G3XTJ and VQ9KK on CW.

Many stations are using three or four element beams with big boots in the feedline, but P29MJ was using a FT7B and dipole and he was S9. Most popular rag-chewing frequencies appear to be around 7075 kHz and also around 7082 kHz SSB.

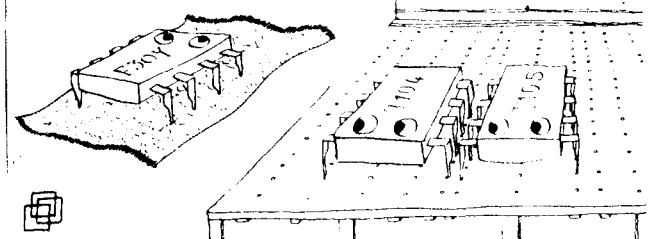
CU on 40,

Dah-di-di-dit Dah-di-dah

\*\*\*\*\*HAMADS\*\*\*\*\*

FOR SALE: Heathkit GR 88 - VHF/FM receiver tunable 152 - 174 MHz. Brand New bargain R30. Covers VHF shipping, doctor service, taxis, Escom etc.

WANTED: OSKER - BLOCK SWR meter.  
For both of these, contact Dudley ZS2AW,  
10 Cromwell Street, Grahamstown 6140.



LOOKS LIKE HE GOT THE SAUDI ARABIA CONTRACT



# Power x 2

## — dual auto batteries

Your car will always start, and you can operate all you like.

Harry J. Miller  
991 42nd Street  
Sarasota FL 33580

If you'd like to install a second battery in your car to operate your radio, CB unit, ham setup, etc., and not worry about having enough current to operate your starter, use the device shown in Fig. 1.

Your car's alternator will charge both batteries, but operating your radio gear too long will only discharge one, leaving the regular vehicle battery fully charged for instant use.

D1 through D4 are stud-mounted silicon diodes rated at 60 piv and 25 Amps or more. Mount with the usual insulating washers on a heat sink. ■

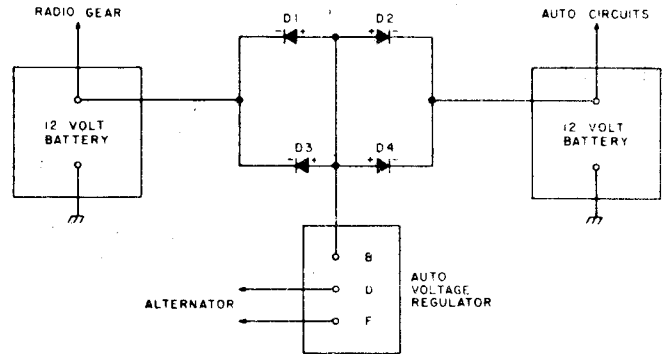


Fig. 1. Battery isolator schematic diagram.

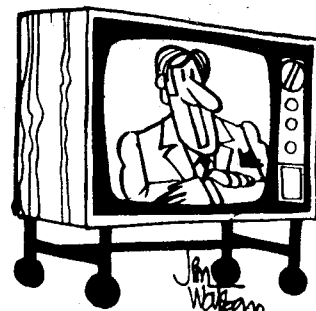
\*\*\*\*\*

### A SECRETARY'S CONSOLATION.

If a secretary writes a letter, it is too long.  
If he (she) sends a postcard, it's too short.  
If he issues a bulletin, he's a spendthrift.  
If he attends a committee meeting, he's butting in.  
If he stays away, he's a shirker  
If he offers a suggestion, he's a "know-all".  
If he says nothing, he is useless.  
If the attendance at the meeting is slack, he should have called the members up.  
If he calls them up, he's a pest.  
If he asks a member for his subscription, he is insulting.  
If he doesn't, he is lazy  
If the meeting is a big success, the committee gets the praise.  
If it is a failure, the secretary is to blame.  
If he asks for advice, he is incompetent.  
If he does not, he is swollen headed.  
Ashes to ashes, dust to dust,  
If the others won't do it.....the secretary must.

\*\*\*\*\*

n Driehoek is n sirkel met drie hoeke in.  
n Lugleegte is n leë plek met niks in nie.  
n Kurwe is n reguitlyn wat gebuig is.  
Die dae in die winter is korter, want koue laat alles krimp.  
Mars is die naam van n ster wat so ver is dat die n miljoen jaar sal neem om daarnatoe te loop met n vliegtuig.



"Warning: The following commercials may damage your pocket."

WHAT HAVE YOU DONE FOR YOUR BRANCH IN THE  
LAST MONTH?